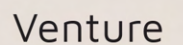
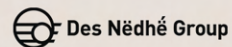


FOUR SACRED MEDICINES





The Indigenous Carpet Initiative is a groundbreaking collaboration that epitomizes the spirit of partnership, creativity, and social responsibility. This collective effort has been made possible through the united efforts of several outstanding organizations:

- 400 Drums (Artist Collective): An ensemble of Indigenous artists whose creativity breathes life into the designs, ensuring authenticity and cultural resonance.
- Venture Carpets (Sustainable Canadian Manufacturer): Committed to eco-friendly practices, Venture Carpets transforms the artistic vision into tangible and sustainable carpet patterns.
- Ela Hultsi (Indigenous Facilities Management, Exclusive Distributor): A key player in ensuring that the distribution is both efficient and responsible, maintaining the integrity of the cultural narrative.
- BGIS (Sponsorship, Development, and Coordination): Providing vital financial and logistical support, BGIS ensures the seamless development and promotion of the project.

Together, these entities share a noble vision to benefit Indigenous communities through commercial innovation. Their united goal is to elevate education and awareness about Indigenous culture while providing commercial alternatives that allow clients to express their genuine commitment to reconciliation. By transcending individual boundaries, the collaboration opens up new avenues for creating compelling and meaningful options.

The artistic soul of this initiative lies in the carpet patterns, each meticulously crafted and inspired by original Indigenous artwork, jointly commissioned by Ela Hultsi and BGIS. The intricate stories woven into each piece serve as a profound educational tool to enlighten and sensitize people to Indigenous values and principles.

With each carpet purchase, customers receive a reproduction of the inspirational artwork, either digitally or physically, that forms the basis of the carpet pattern. This unique inclusion brings the art to life, with a QR code launching an immersive multimedia experience. Viewers can delve into the artist's origin and the profound inspiration behind each artwork and corresponding carpet pattern, creating an engaging and enlightening journey.

Moreover, the initiative extends beyond mere commercial gain. A designated percentage of all sales proceeds will be channeled to support an Indigenous Charity. The goal is to foster and nourish the talents of Indigenous artists and contribute to the broader community's growth and enrichment.

In essence, the Indigenous Carpet Initiative represents far more than just an array of beautiful carpet tiles. It's a beacon of cultural celebration, an educational platform, and a symbol of shared social responsibility. Through this collaboration, the involved parties aspire to enhance the visibility of Indigenous interests and catalyze a positive economic impact within the community. By intertwining art, commerce, and philanthropy, the initiative weaves a tapestry that connects us all to the richness and depth of Indigenous heritage.

BGIS

With a footprint that spans the globe, BGIS stands as a testament to Canadian excellence in integrated facilities management. Their decades of experience have shaped a reputation for reliability, innovation, and unparalleled service. BGIS's tailored solutions, aligned with the highest industry standards, empower businesses to thrive in environments where every detail is designed for success. A trusted partner to countless organizations, BGIS is redefining the future of facilities management, one space at a time.



400 DRUMS

400 Drums is a heartbeat, a rhythm that echoes the voices of indigenous cultures. As an Indigenous artist collective, they create more than art; they craft a vibrant tapestry of heritage, resilience, and community. Through various mediums artwork, 400 Drums transcends boundaries, celebrating the rich legacy of Indigenous people and inspiring a deeper connection with roots and traditions while leveraging innovation.

ELA HULTSI

Ela Hultsi, an Indigenous Canadian facilities management company, embodies a holistic approach to maintaining and enhancing spaces. Merging traditional wisdom with modern methods, they create environments that are not only functional but culturally resonant. Ela Hultsi's commitment to community and the land reflects a profound respect for Indigenous values, setting a new paradigm in facilities management that honors both heritage and innovation.



ELA HULTSI
INTEGRATED FACILITIES MANAGEMENT

DES NEDHE

Established in 1991 by English River First Nation (ERFN), the Des Nedhe Development Corporation was designed to grow sustainable employment and business opportunities for ERFN community members.

Des Nedhe Group has grown into a national leader in Indigenous entrepreneurship and economic development – a diverse collective of Indigenous-owned businesses dedicated to creating lasting change in Indigenous communities and corporate supply chains across Canada.

For generations, the local Dene people have used the word Des Nedhe to describe the “great river” that flows next to them – known today as the Churchill River in northern Saskatchewan. Like that great river, Des Nedhe Group is powerful and relentless – always moving forward.



VENTURE CARPETS

Venture Carpets, a Canadian pioneer in carpet manufacturing, weaves the future of sustainability and elegance into every fiber. Committed to LEED and WELL's highest sustainable practices, the company crafts products that not only enhance spaces but preserve the planet. Venture Carpets's environmental stewardship and innovative designs symbolize a harmonious fusion of aesthetics and ethics, transforming interiors while leaving a green footprint.

Venture

THE FOUR SACRED MEDICINES

« Indigenous peoples of North America have used many medicines over the centuries. The four sacred medicines Tobacco, Sage, Cedar, and Sweet Grass are tools with variations from Nation to Nation. These medicines are considered sacred as they were gifted to us by the Creator and together, they are used as a way to communicate with the creator.

Each medicine occupies a different position on the Medicine Wheel and are used in our everyday life - in ceremony, for healing, and for connecting with the Creator and Earth. It is believed by our elders that spirits are attracted to the aroma of the sacred medicines and therefore allow us to better connect with the consciousness or spirits of All Our Relations of earth and in the spirit or ethereal realms.»

Each of the following sacred medicines has inspired four distinct artwork pieces, serving as the foundation for our collection.

Tobacco was the 1st medicine to be given to our people by the Creator. Tobacco is the most important and powerful of all four medicines. Tobacco sits in the eastern door of the medicine wheel and is used as an offering in ceremonies and as sacred gifts to elders, loved ones, and medicine people. Tobacco is used to open the door to communicating with the spirit world. This is because it is believed that Tobacco moves ahead of our words so that they may be received by the Creator in a kind and respectful way. Tobacco allows what is true in our hearts to pass through for our family, community, and loved ones.



Cedar is the third sacred medicine and occupies the Northern door on the medicine wheel. Cedar is connected to safety and protection and is used in ceremonies, smudging, and sweat lodges. In tea, Cedar is healing when burned, or can be placed in a bath for cleaning and healing the body. Cedar is used to clean the blood and to cure illnesses of the respiratory system. When burned or soaked in, it promotes clarity and calmness.



Sage is the second sacred medicine and sits in the western door of the medicine wheel. Sage is commonly used for smudging and ceremony. It is the most potent cleanser of our homes, bodies, and sacred items. Sage is believed to remove troubles from our minds and shadows from our hearts. It has been used for centuries to purify as an antiseptic and can be made into tea to absorb the vitamins and nutrients or burned to clean and purify the air.



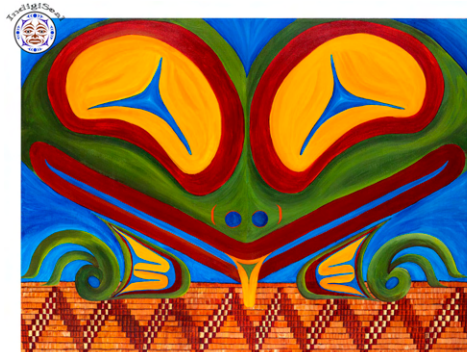
Sweetgrass is the fourth sacred medicine and sits at the southern door of the medicine wheel. Sweetgrass can be found all over North America (Turtle Island) and grows in mountainous areas, prairies, plains as well as bogs. Sweetgrass has a calming effect and calls in the love of the ancestors to support us on our earth walks. Sweetgrass promotes peace, kindness, and purification.





CANDACE CAMPO

Candace Campo is a proud member of the Shishalh Nation located on the Sunshine Coast in British Columbia, Canada. Trained as an anthropologist and school teacher, sharing outdoor education and culture was a dream made possible by growing up on the land and being taught the stories and history of her people by her parents and elders in the community. Along with being an accomplished artist, Candace is also a head kayak guide, storyteller and educator-facilitator.

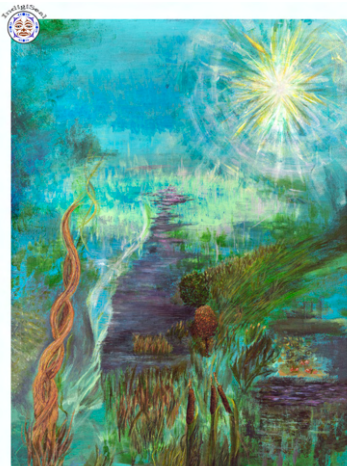


CEDAR SISTER
Representing the medicine of Cedar



AMIRA CARRIER

« My name is Amira Carrier from Saskatchewan Piapot First Nation. I am a multimedia artist in my third year in VIAR (Visual Arts) at Emily Carrier University of Art & Design located in Vancouver, British Columbia. I specialize in mixed media forms to distinguish the concepts of identity and belongingness. These themes take form through the use of colour, figures, and objects within my artwork. I take careful consideration of the subject matter. I first imagine the themes and then create art. I always hope the art becomes a larger conversation to dissect for viewers.» Amira has worked with 400 Drums in roles ranging from graphic and fine artist to coordinator and media/public speaking. Amira will continue her studies while continuing to build her career with 400 Drums.



WANISKA

Representing the medicine of Sweetgrass

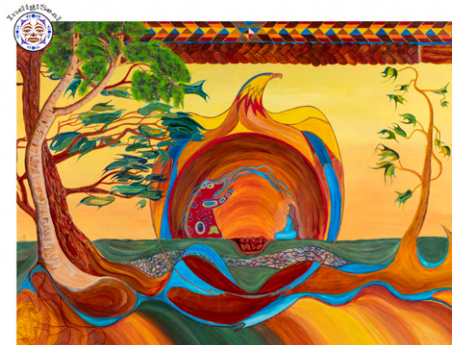


TAMARA GODDARD

Tamara Goddard, from the esteemed Saulteau Nation, fervently champions the notion that unimpeded access to pure water, secure housing, and reliable power are indispensable human rights, vital for establishing equilibrium between humanity and our shared planet. Over a quarter of a century, Tamara meticulously scrutinized diverse socio-economic systems, discovering that many deliberately hinder humanity's capacity to prosper.

Motivated by a visionary experience at age 19, Tamara's educational and investigative pursuits focused on an innovative economic model rooted in the principles of natural law and the organic growth patterns found in nature. As the driving force behind Four Our Future, Tamara spearheaded various national publications, emphasizing the potential of blockchain and web3 technology to foster equitable distribution of wealth and resources.

She further incubated 400 Drums, an NFT initiative dedicated to demonstrating the capacity of web3 technology to dismantle socio-economic barriers. Tamara's steadfast commitment lies in nurturing the next generation of trailblazers & artists, ensuring the development of a regenerative economic model to benefit both people and the planet.



WAYS OF KNOWING
Representing the medicine of Tobacco



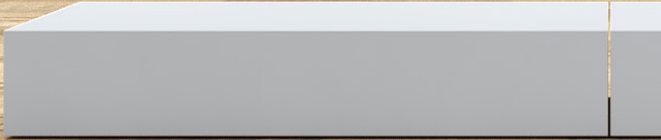
DAVID FIERRO

«A drum is an acoustic tool to open a portal to a more meaningful, broader experience. For eons all across the globe drumming has aided people while they looked for a connection to the past, being in the present, or inspiration to lead them into the future. For some, it's an aid to tell a story or sing a song from a time long past. For others, it's to create a new story or to recall one that's been long lost. Quite often, it gives courage to the unsure and the isolated to participate in social events.

Whether a pow wow, sweat or personal hand drum, a rattle or two carved sticks- the rhythmic sound transports people into a state from which stories are told, dances are created and emotions are tapped into. Meditation is easier to enter into, as is participation in public gatherings.» - David Fierro

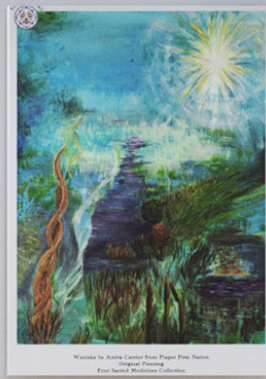


THE CEREMONY
Representing the medicine of Sage



- A Grasslands - 10256
- B Sand - 10255
- C Appalachian - 10259

- D Autumn - 10240
- E Arc - 10239
- F Cedar - 10236



G

Drum - 10248

H

Harvest - 10247

I

Migration - 10249

J

Bark - 10252

K

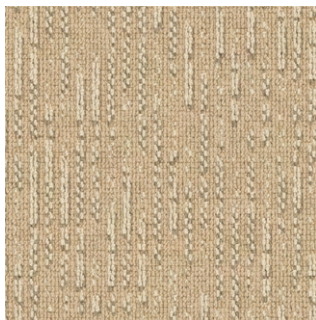
Plains - 10251

L

Marmot - 10253

M

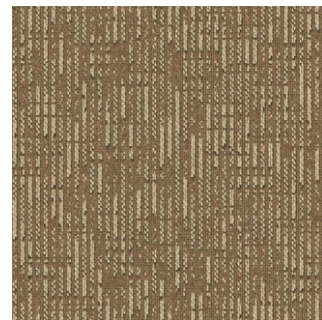
Serene - 10235



Ancestral Threads 40249
Serene 10235



Earthweave 40250
Arc 10239



Ancestral Threads 40249
Cedar 10236



Waniska 40253 - Sand 10255



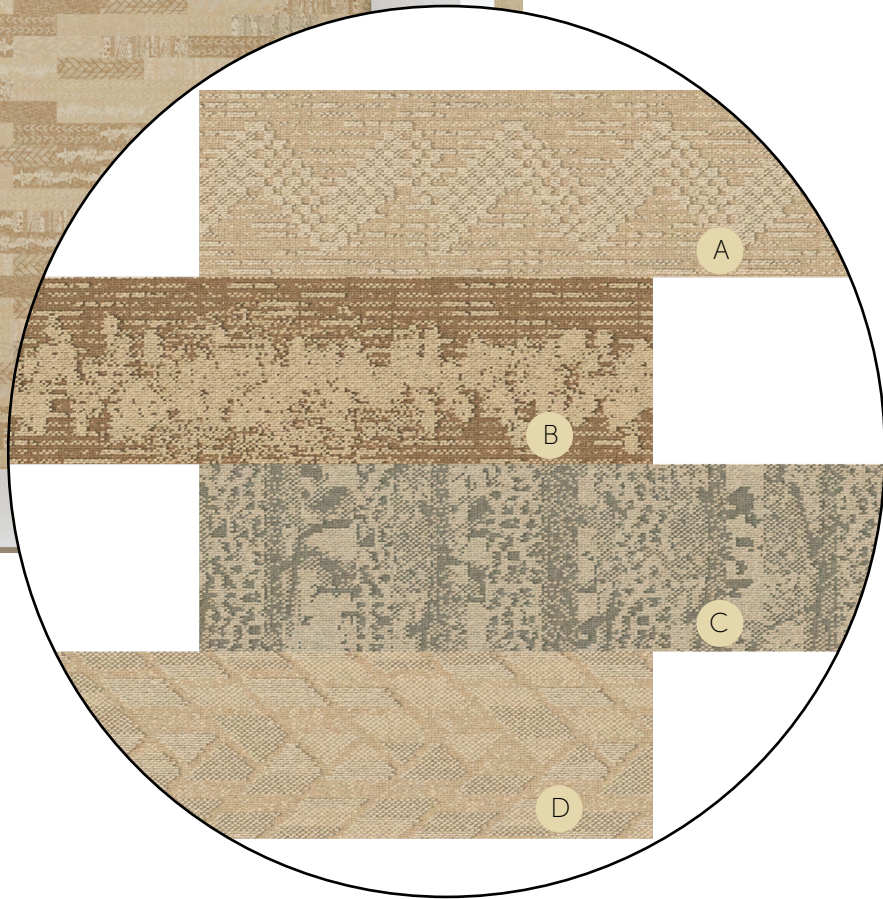
Earthweave 40250 - Autumn 10240



The Ceremony 40251 - Drum 10248



The Ceremony 40251 - Harvest 10247

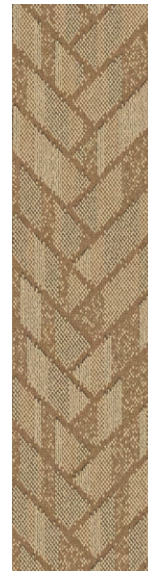


A Cedar Sister 40254 - Appalachian 10259

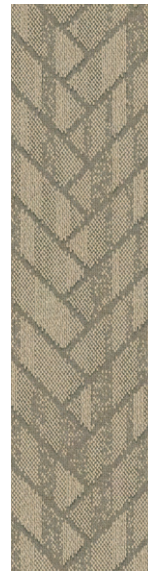
B Waniska 40253 - Grasslands 10256

C The Ceremony 40251 - Migration 10249

D Ways of Knowing 40252 - Plains 10251



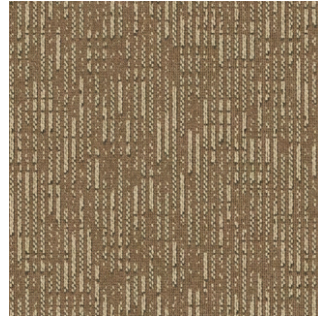
Ways of Knowing 40252 - Bark 10252



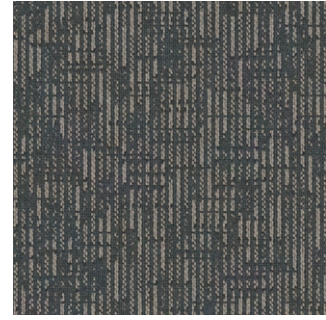
Ways of Knowing 40252 - Marmot 10253



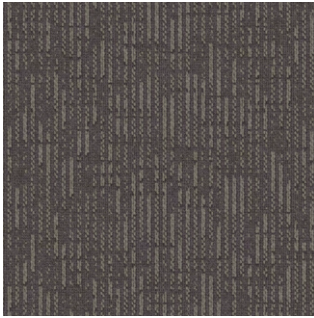
Serene
10235



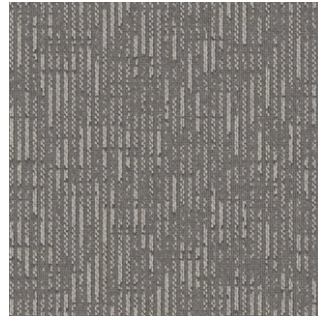
Cedar
10236



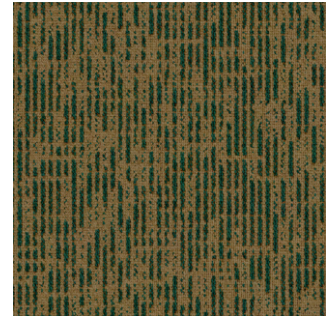
Pearl
60151



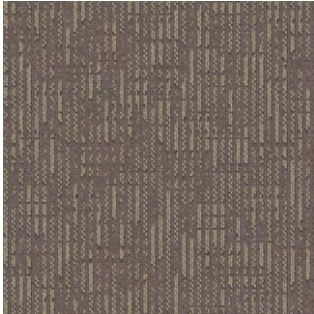
Clay
50317



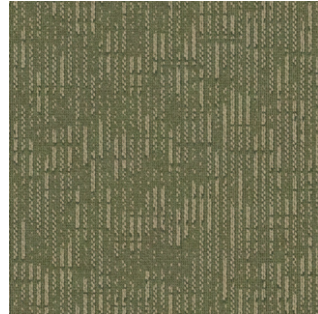
Falls
15511



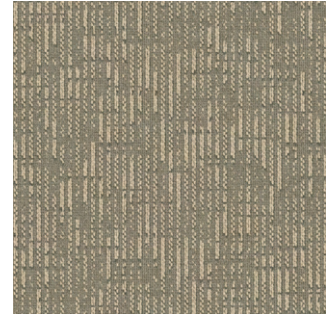
Tripolar
30110



Spruce
50318



Fir
30111

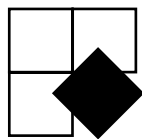
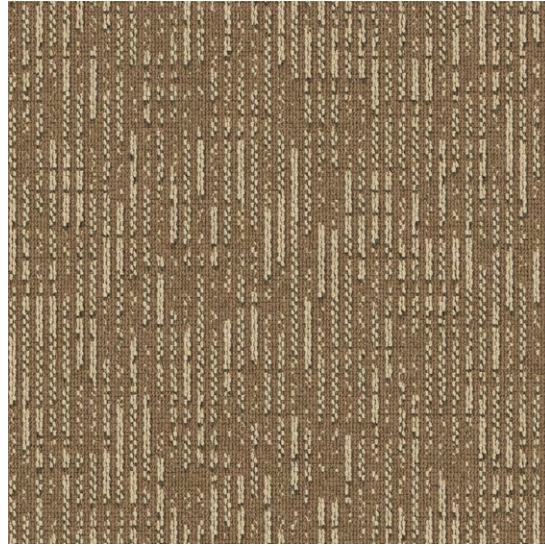


Nestling
10237

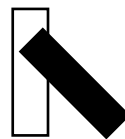


Wolf
10238

ANCESTRAL THREADS

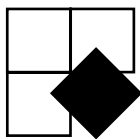
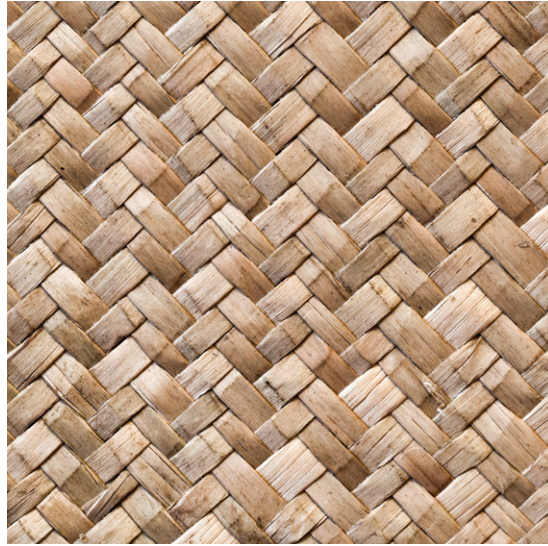


50 cm x 50 cm
19.68" x 19.68"

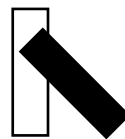


25 cm x 100 cm
9.84" x 39.37"

EARTHWEAVE



50 cm x 50 cm
19.68" x 19.68"



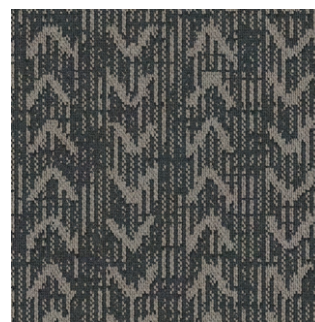
25 cm x 100 cm
9.84" x 39.37"



Arc
10239



Autumn
10240



Nocturne
60152



Leather
50319



Monolith
15512



Cycle
30112



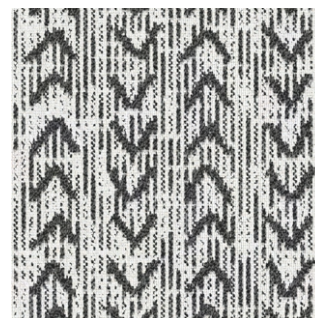
Buzzard
50320



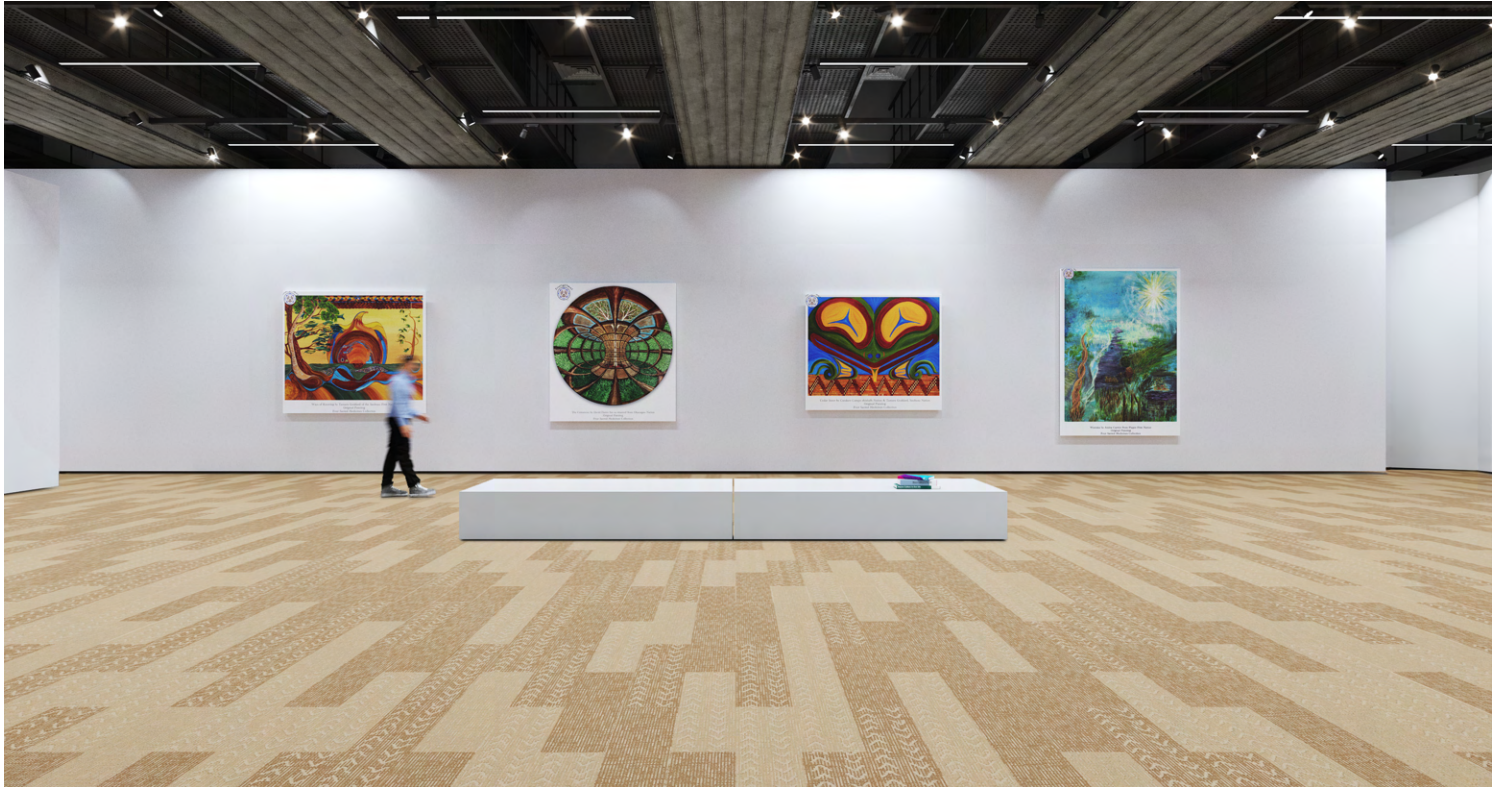
Herbs
30113

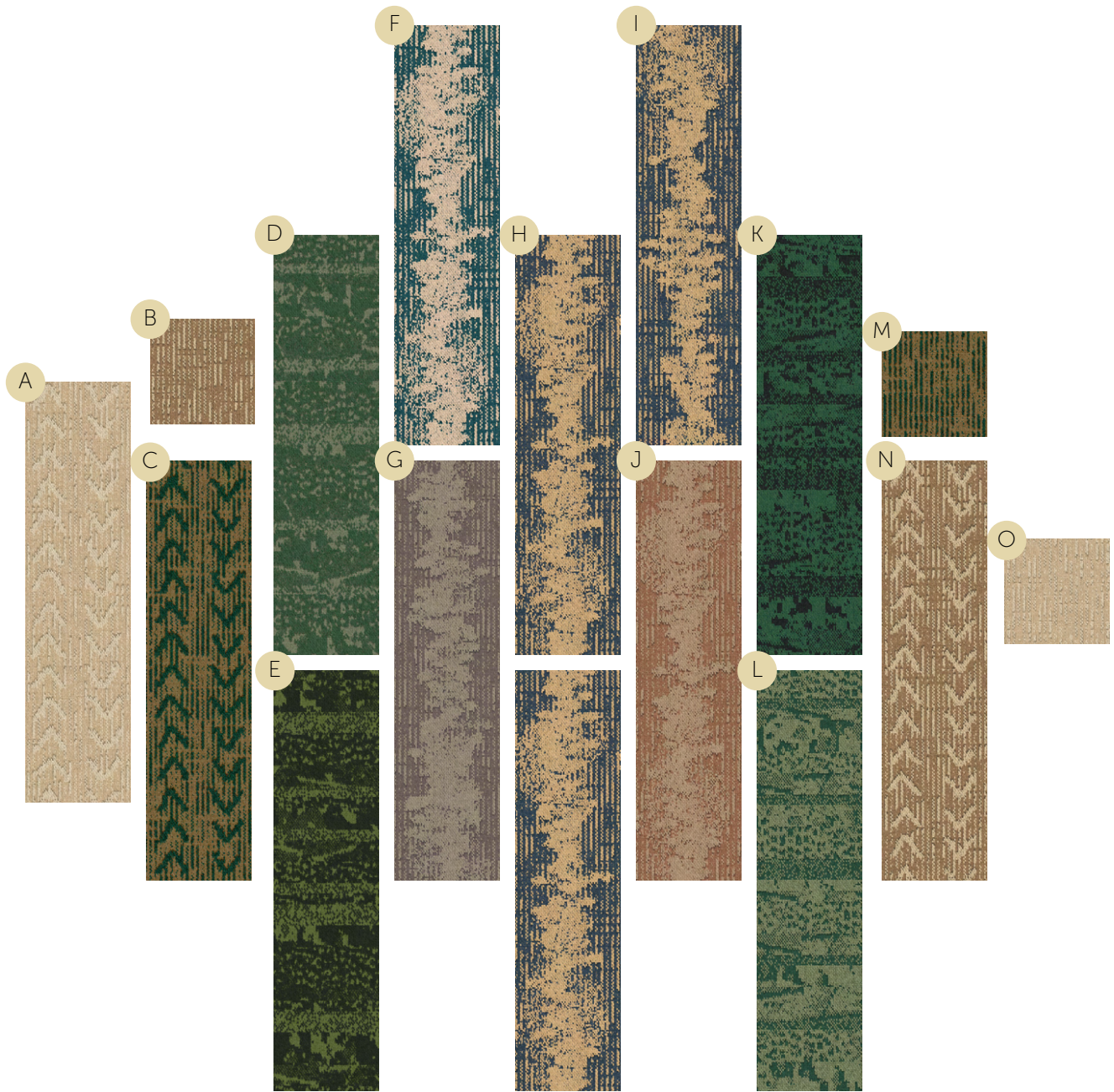


Fungi
10241



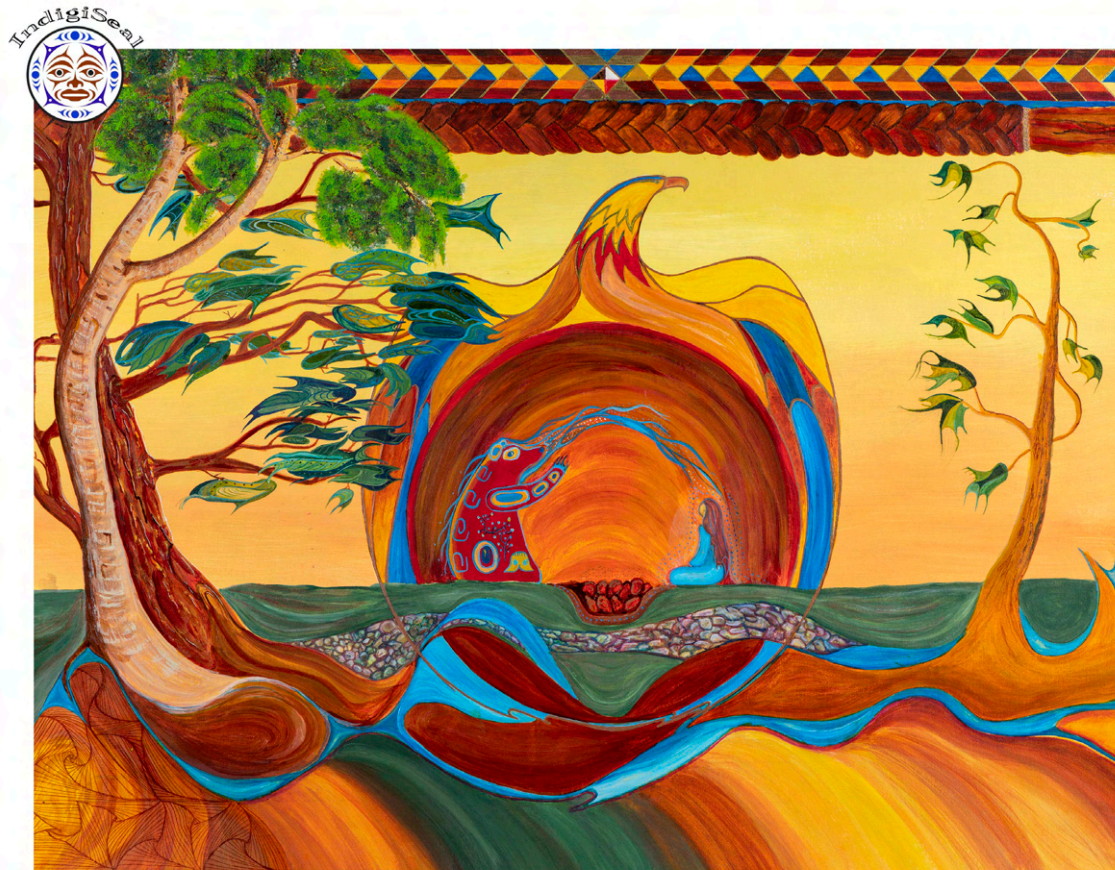
Orca
10242





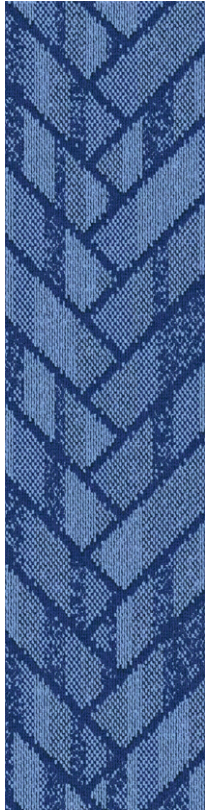
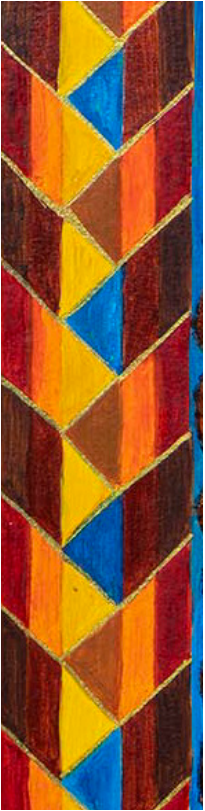
- A Earthweave 40250 - Arc 10239
 - B Ancestral Threads 40249 - Cedar 10236
 - C Earthweave 40250 - Cycle 30112
 - D The Ceremony 40251 - Bogland 30125
 - E The Ceremony 40251 - Pine 30127
- F Waniska 40253 - Grain 30129
 - G Waniska 40253 - Dance 50328
 - H Waniska 40253 - Golden 60158
 - I Waniska 40253 - Sprout 30128
 - J Waniska 40253 - Thuya 40090
- K The Ceremony 40251 - Turtle 30126
 - L The Ceremony 40251 - Salamander 30124
 - M Ancestral Threads 40249 - Tripolar 30110
 - N Earthweave 40250 - Autumn 10240
 - O Ancestral Threads 40249 - Serene 10235

WAYS OF KNOWING



Ways of Knowing by Tamara Goddard of the Saulteau First Nation
Original Painting
Four Sacred Medicines Collection

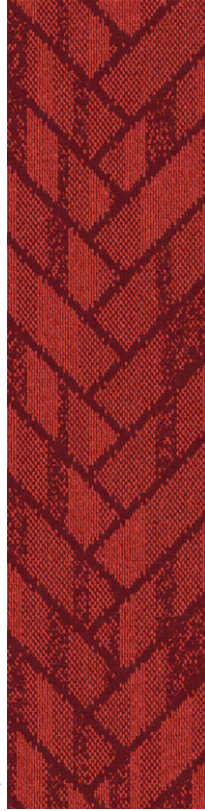
40252



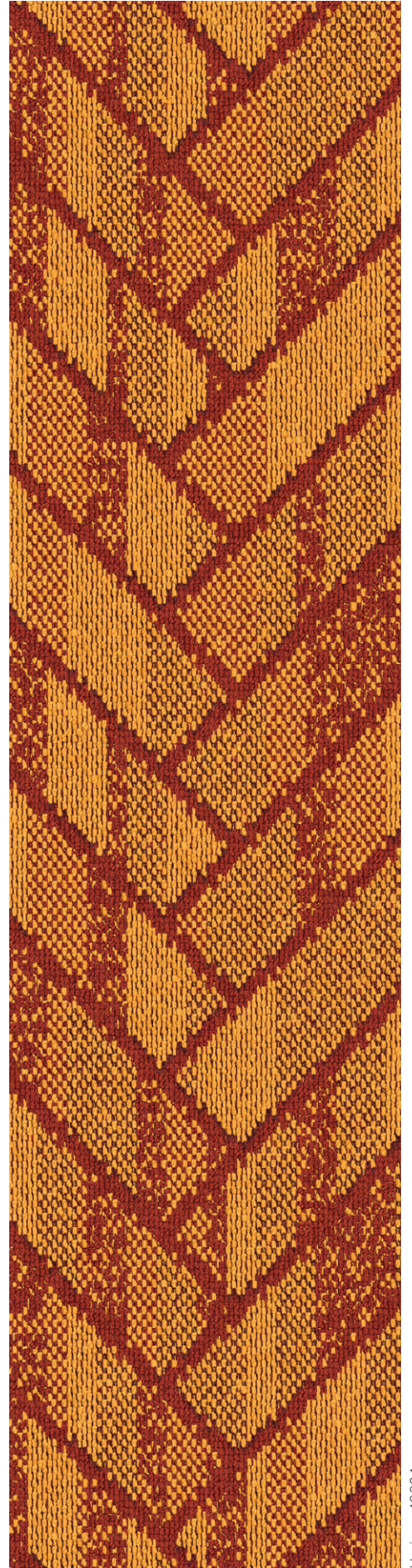
Aurora 60160



Maple 50332



Rays 40093



Horizon 40094



Ways of Knowing 40252

Otter 60155

Classic

WAYS OF KNOWING

40252



25 cm x 100 cm
9.84" x 39.37"



Mycellium 30119



Mammot 10253



Feather 10254



Plains 10251



Bark 10252



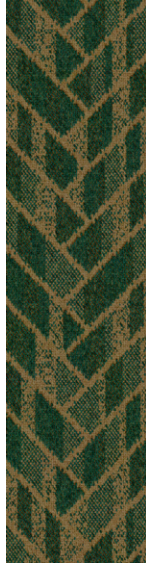
Otter 60155



Muskkrat 50325



Braid 15515



Toad 30118



Wheat 50326



- Earthweave 40250 Monolith 15512 Classic
- Cedar Sister 40254 Flint 15517 Classic



- Ways of Knowing 40252
- Ways of Knowing 40252

Otter 60155

Muskrat 50325

Herringbone

Herringbone

THE CEREMONY

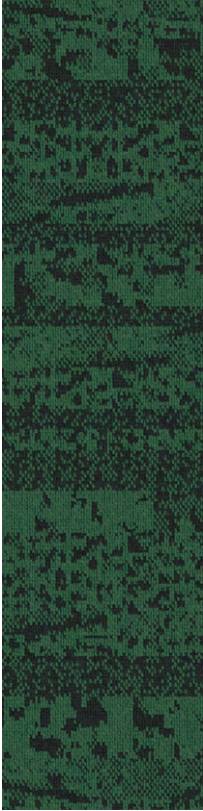


The Ceremony by David Fierro (xa xa smaxwt) from Okanagan Nation

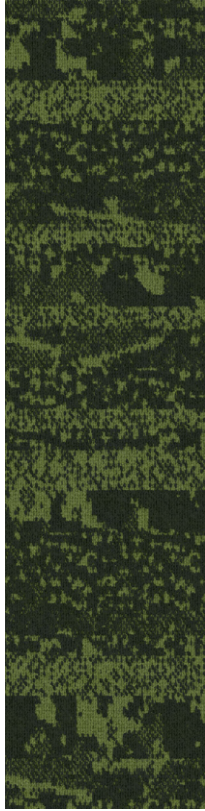
Original Painting

Four Sacred Medicines Collection

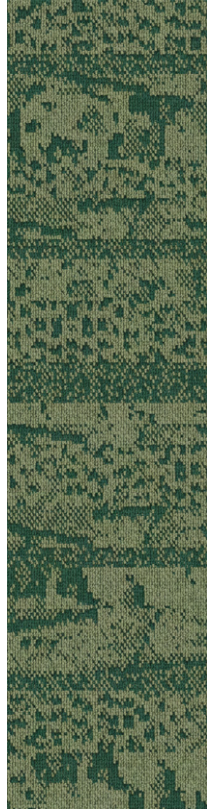
40251



Turtle 30126



Pine 30127



Salamander 30124



Bogland 30125



The Ceremony 40251

Drum 10248

Classic

THE CEREMONY

40251



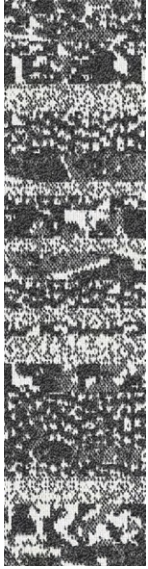
25 cm x 100 cm
9.84" x 39.37"



Trek 30117



Migration 10249



Snowy Owl 10250



Harvest 10247



Drum 10248



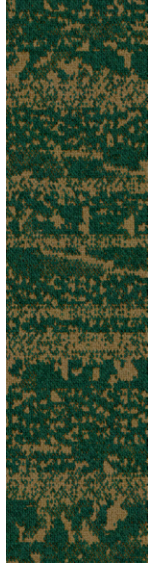
Rock 60154



Shell 50323



Glacier 15514

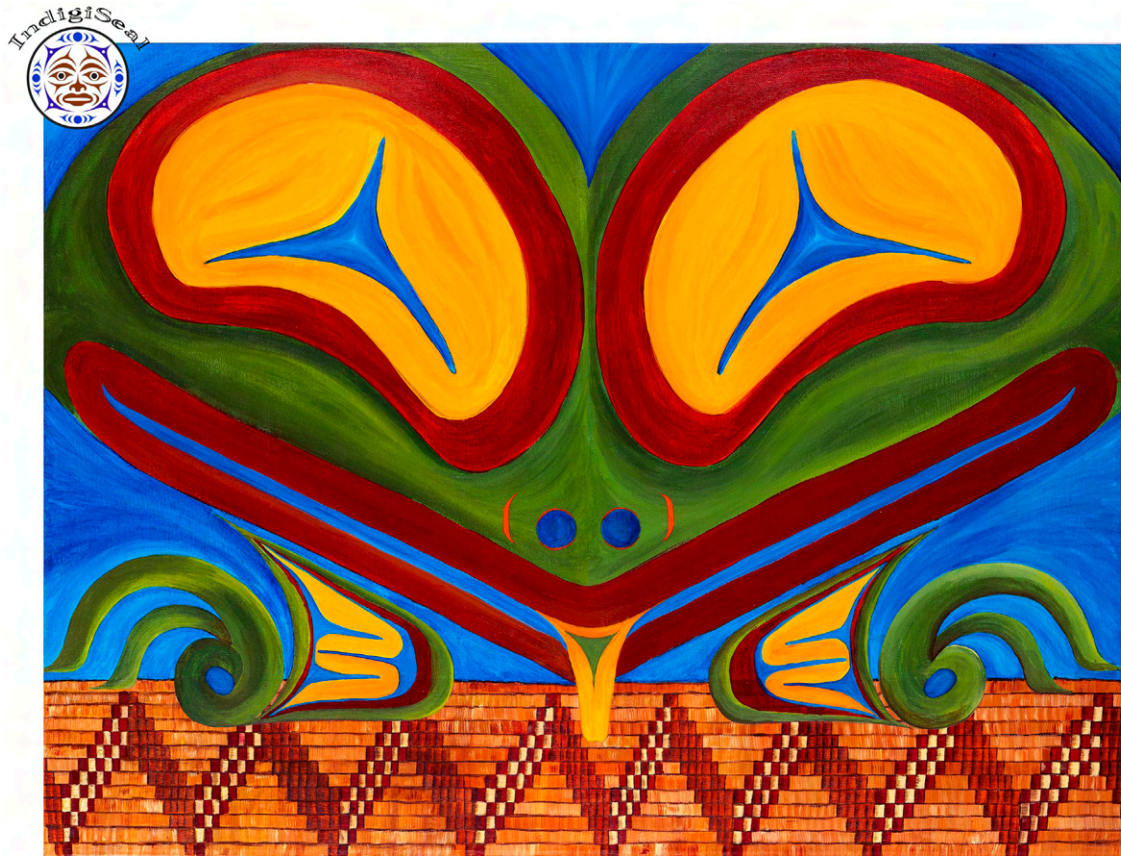


Forest 30116



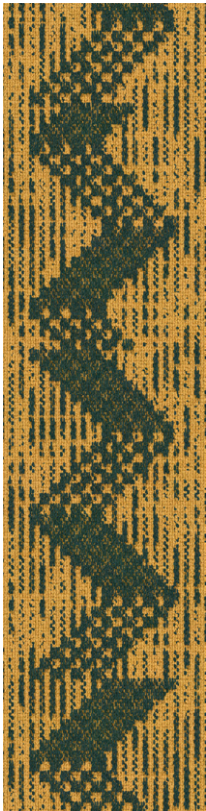
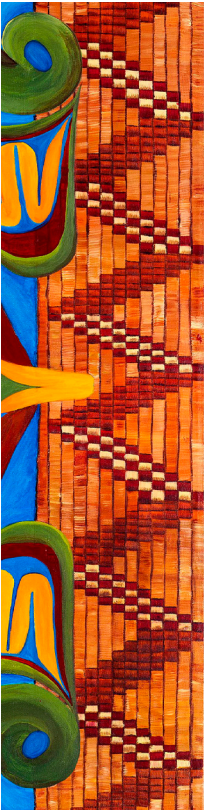
Hawk 50324

CEDAR SISTER

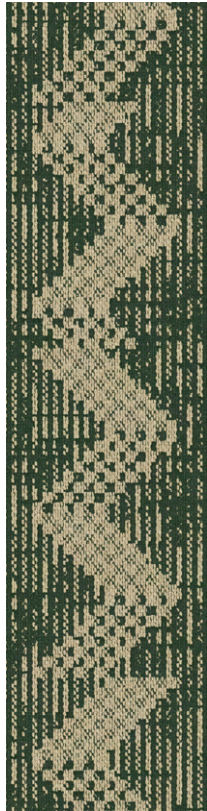


Cedar Sister by Candace Campo, Shishalh Nation & Tamara Goddard, Saulteau Nation
Original Painting
Four Sacred Medicines Collection

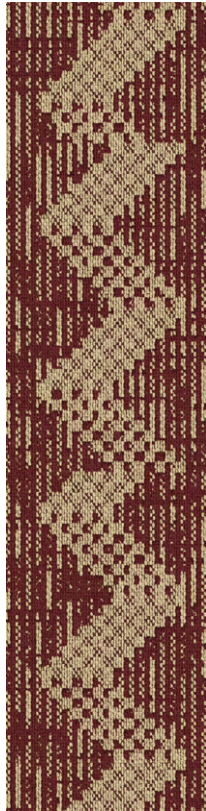
40254



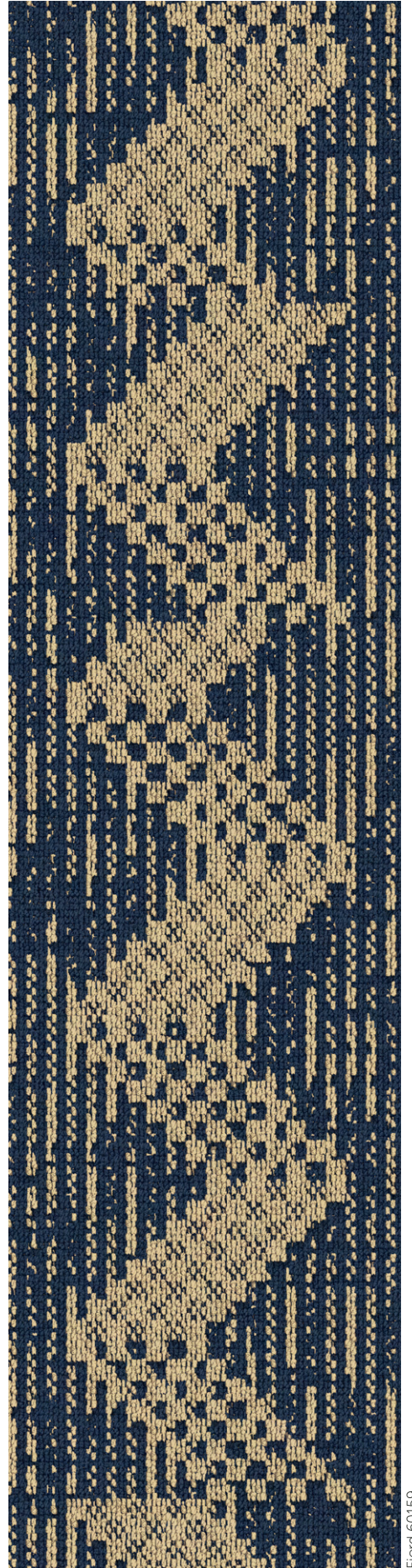
Gather 10265



Swamp 30131



Root 40092



Fjord 60159



Cedar Sister 40254

Tobacco 10260

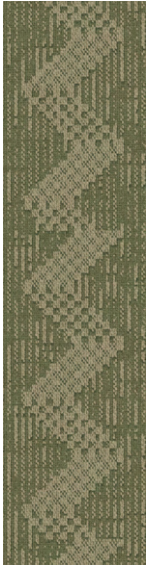
Classic

CEDAR SISTER

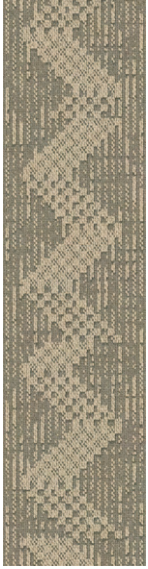
40254



25 cm x 100 cm
9.84" x 39.37"



Caribou 30123



Fen 10261



Eagle 10262



Appalachian 10259



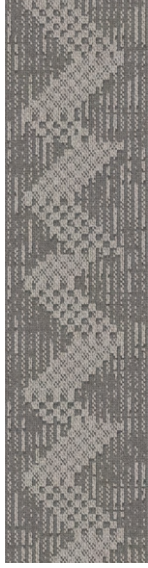
Tobacco 10260



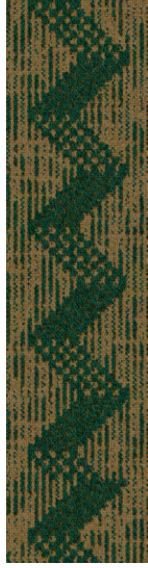
Mica 60157



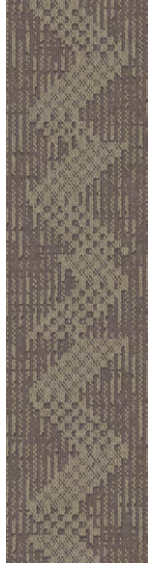
Bison 50329



Flint 15517



Aquila 30122



Reed 50330



- Ancestral Threads 40249

Falls 15511
Nestling 10237

Classic

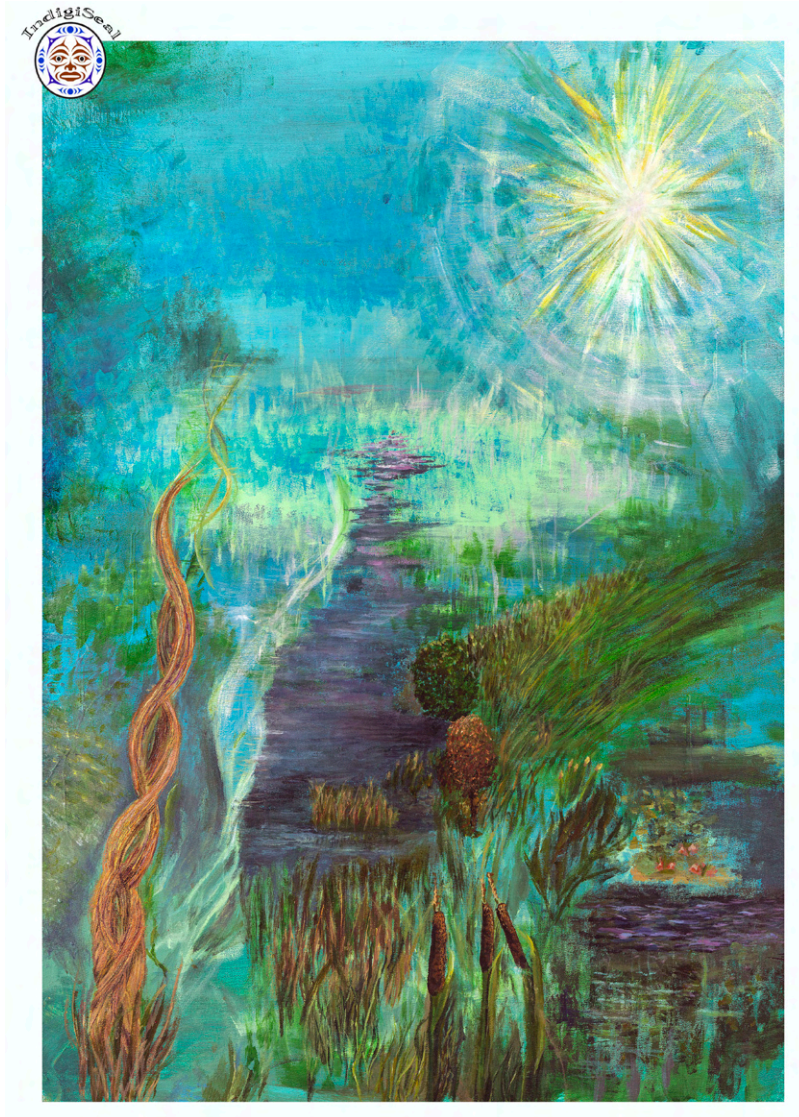


• Earthweave 40250

Fungi 10241
Autumn 10240
Monolith 15512

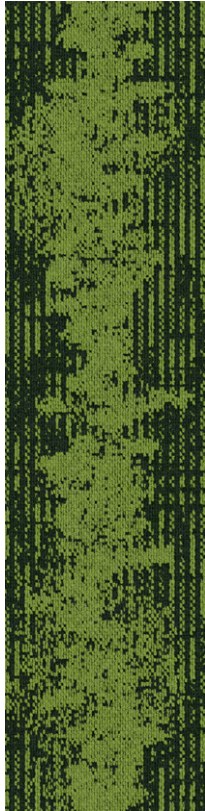
Classic

WANISKA



Waniska by Amira Carrier from Piapot First Nation
Original Painting
Four Sacred Medicines Collection

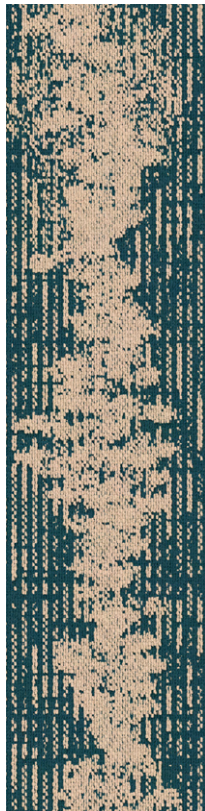
40253



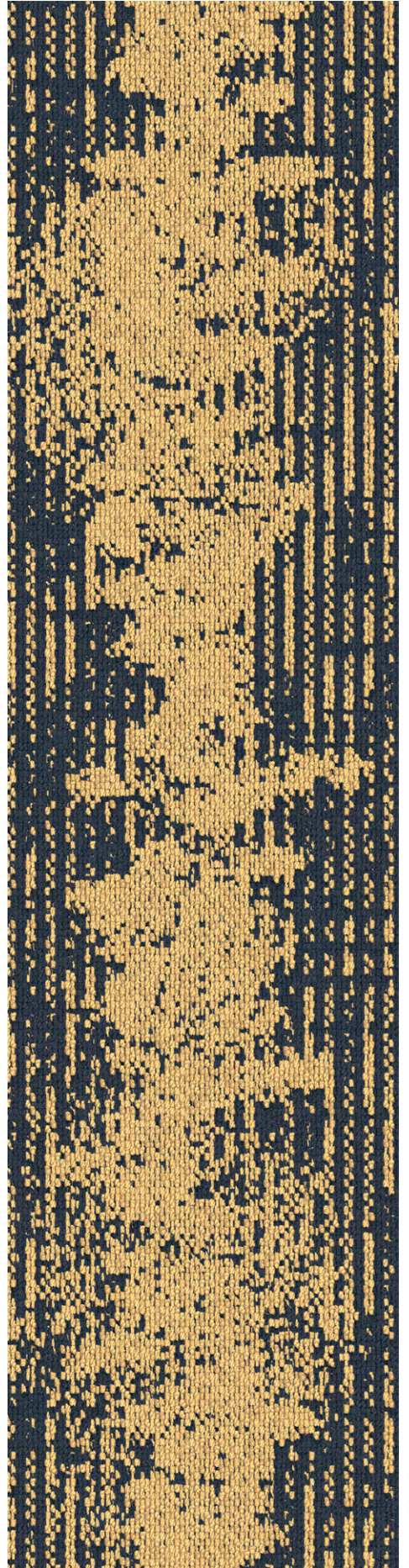
Sprout 30128



Thuja 40090



Grain 30129



Golden 60158

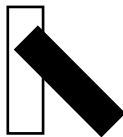


Waniska 40253

Cliff 30120

Classic

WANISKA
40253



25 cm x 100 cm
9.84" x 39.37"



Cone 30121



Earth 10257



Frozenbrook 10258



Sand 10255



Grasslands 10256



Marsh 60156



Storm 50327



Rocky 15516



Cliff 30120



Dance 50328



- Ancestral Threads 40249
- Sacred Symbol 40255

Wolf 10238
Beluga 10246

Herringbone
Border



SACRED SYMBOL



Eclipse 60161



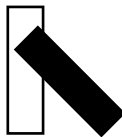
Ardent 40095



Amber 50333



Fur 60162



25 cm x 100 cm
9.84" x 39.37"



Pilgrim 10243



Antlers 10244



Totem 60153



Racoon 50321



Whale 15513



Ritual 30114



Movement 50322



Elk 30115



Morel 10245



Beluga 10246

- Sacred Symbol 40255
- Sacred Symbol 40255
- Waniska 40253
- Cedar Sister 40254

Amber 50333
Beluga 10246
Frozenbrook 10258
Eagle 10262

Meeting Room
45°
45°
45°



- Ancestral Threads 40249
- Earthweave 40250
- The Ceremony 40251
- Ways of Knowing 40252

- Wolf 10238
- Orca 10242
- Snowy Owl 10250
- Feather 10254

- 45°
- 45°
- 45°
- 45°





- Sacred Symbol 40255
- Sacred Symbol 40255
- Waniska 40253
- Cedar Sister 40254

Amber 50333
 Beluga 10246
 Frozenbrook 10258
 Eagle 10262

Meeting Room
 45°
 45°
 45°



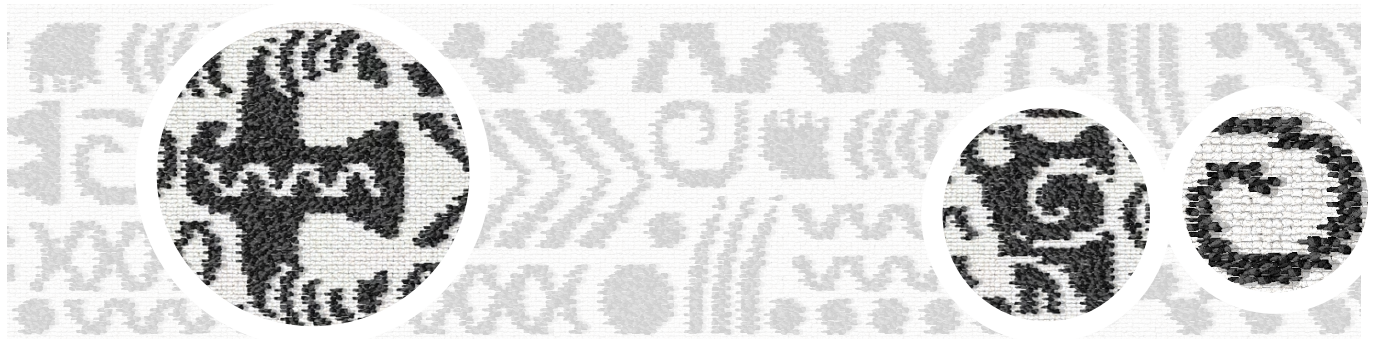
- Ancestral Threads 40249
- Earthweave 40250
- The Ceremony 40251
- Ways of Knowing 40252

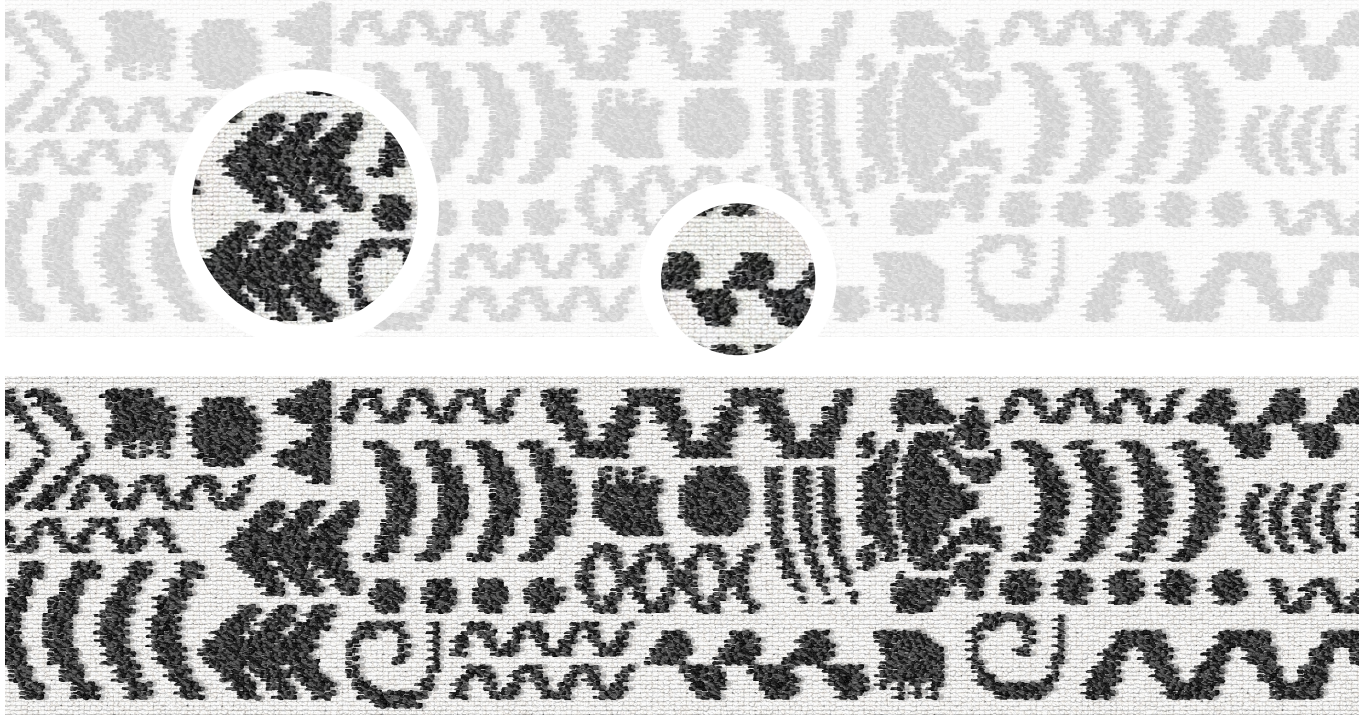
Wolf 10238
 Orca 10242
 Snowy Owl 10250
 Feather 10254

45°
 45°
 45°
 45°

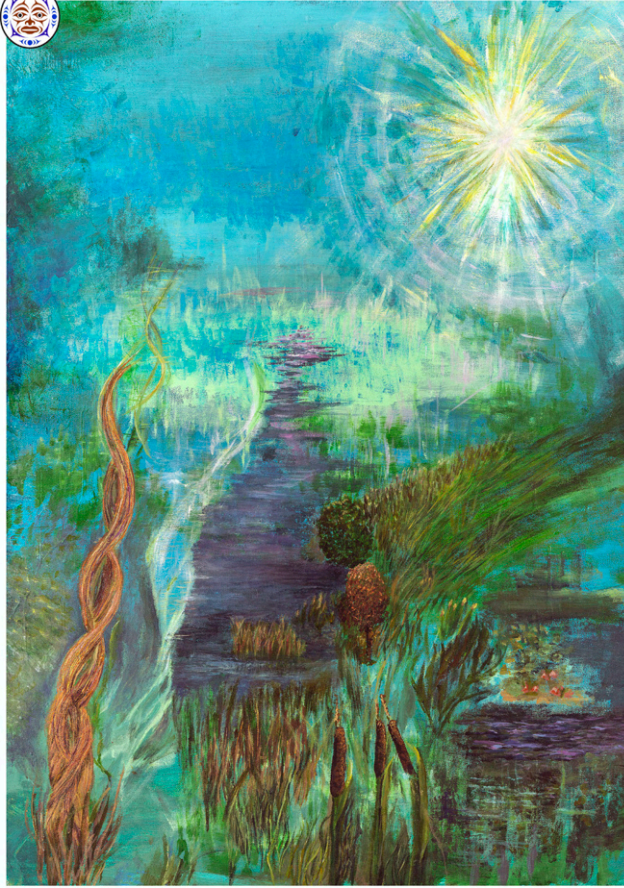


Ways of Knowing by Tamara Goddard of the Saulteau First Nation
Original Painting
Four Sacred Medicines Collection

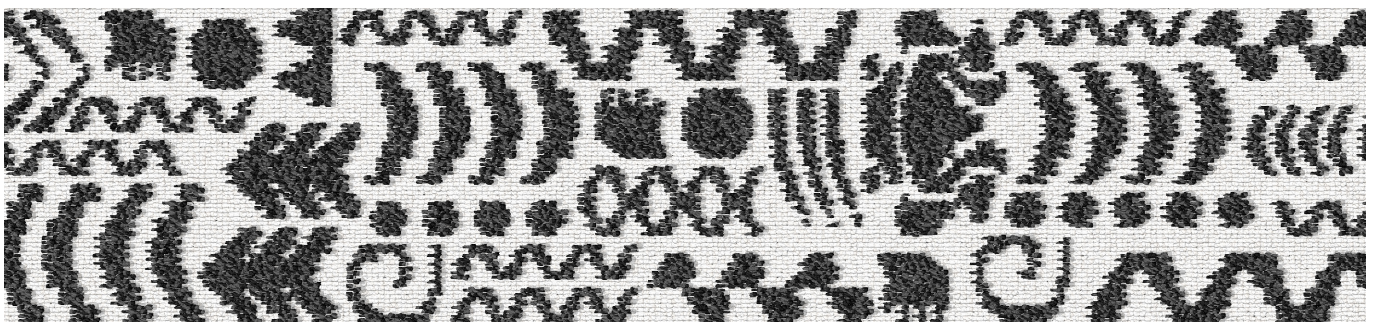
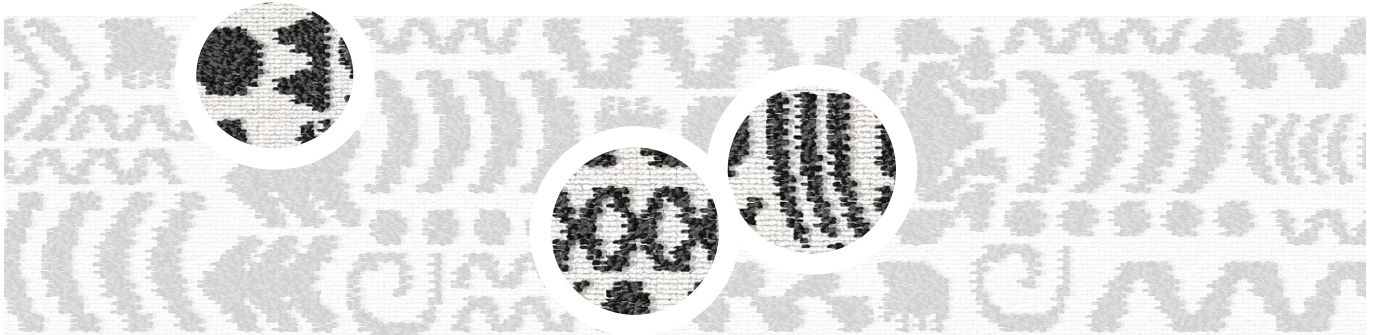


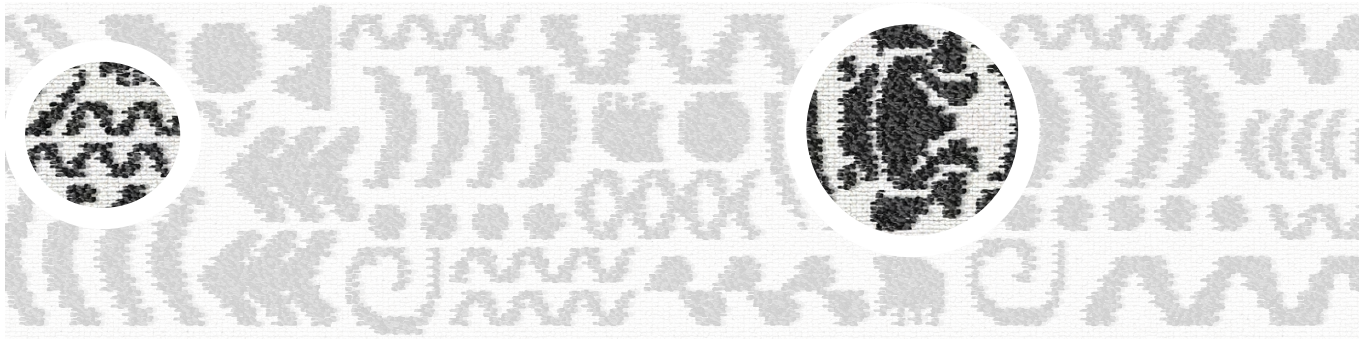
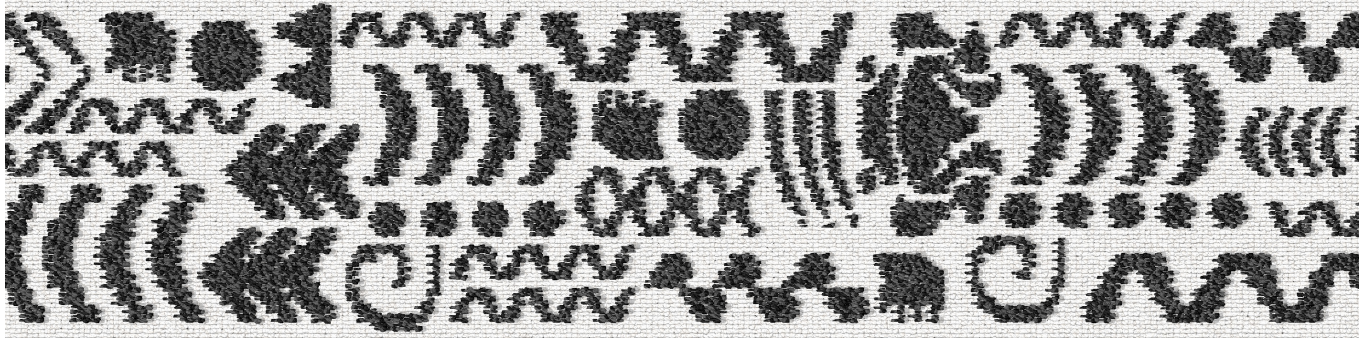


The Ceremony by David Fierro (xa xa smaxwt) from Okanagan Nation
Original Painting
Four Sacred Medicines Collection



Waniska by Amira Carrier from Piapot First Nation
Original Painting
Four Sacred Medicines Collection





Cedar Sister by Candace Campo shishalh Nation & Tamara Goddard, Saulteau Nation
Original Painting
Four Sacred Medicines Collection

PRECIOUS LIGHT



Hoelite 10282



Celestite 60176



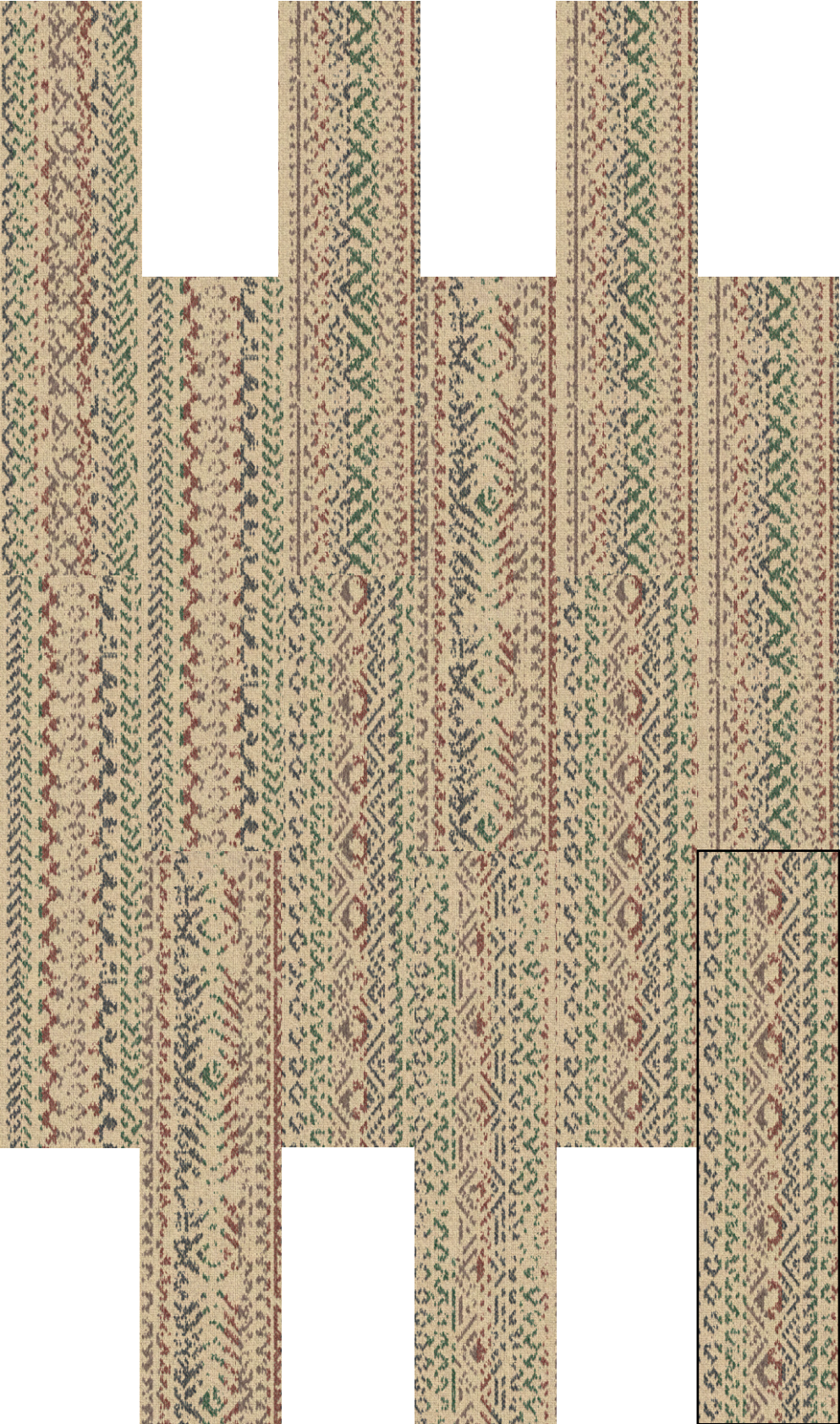
Faustite 15524



Cinnabar 40100



25 cm x 100 cm
9.84" x 39.37"







Border:

- Sacred Symbol 40255
- Beluga 10246

Interior:

- Precious Light 40256
- Cinnabar 40100
Celestite 60176
Faustite 15524
Hoelite 10282



- Origins 40257 Nabesite 10283 Pyrite 10284



40257



ORIGINS



Nabesite 10283



Pyrite 10284



Quartz 10285



Boxite 50338



Vulcanite 75242



25 cm x 100 cm
9.84" x 39.37"



• Origins 40257

Nabesite 10283

Pyrite 10284



• Origins 40257

Quartz 10285

Vulcanite 75242



REGENERATED NYLON

For the first time, stain-free carpets don't have to come at the expense of the environment.

Imagination is infinite. So is ECONYL® nylon.

Our appetite to create and enjoy new products is infinite. The planet's resources aren't. ECONYL® nylon enables us to have both: beautiful new products and a better environment.

ECONYL® regenerated nylon turns waste problems into exceptional design solutions. Made 100% from waste like old carpets, fabric scraps, fishing nets and more, ECONYL® nylon performs the exact same as brand new nylon made from oil and can be recycled, recreated and remolded again and again.

Stain-free carpet

Stain-free carpets have never been so easy with the new ECONYL® StayClean fiber. This solution dyed Nylon 6 fiber is made from 100% regenerated nylon and ensures ultimate stain protection. The intrinsically stain-resistant yarn carries unique polymer characteristics that last the entire lifespan of the carpet, guaranteeing an easy water-only treatment.

A tailor made yarn

Produced with a modified polymer, a special cross section and a state-of-art finishing technology, this solution dyed Nylon 6 fiber assures maximum cleanability and wear and tear resistance.

Our special masterbatch guarantees:

- LIGHT FASTNESS
- COLOR FASTNESS
- UV RESISTANCE

Sustainability

ECONYL® nylon is made from 100% waste, is 100% recyclable, and offers up to a 90% reduction in global warming potential compared to standard nylon.

For every 10,000 tons of ECONYL® nylon used in replacement of virgin nylon, 70,000 barrels of crude oil are saved and 65,100 metrics tons of CO2 are avoided. No waste. No new resources. Just endless possibilities.

For more information, visit www.econyl.com



NYLON RÉGÉNÉRÉ

Pour la première fois, les tapis antitaches ne sont pas créés au détriment de l'environnement.

L'imagination est infinie. Tout comme l'est le nylon ECONYL®

Notre désir de créer et d'apprécier de nouveaux produits est infini. Les ressources de la planète, elles, ne le sont pas. Le nylon ECONYL® nous permet d'avoir les deux : de magnifiques nouveaux produits et un meilleur environnement.

Le nylon régénéré ECONYL® transforme les problèmes liés aux déchets en solutions de conception exceptionnelles. Fabriqué à 100 % à partir de déchets tels que de vieux tapis, des chutes de tissus, des filets de pêche et bien d'autres encore, le nylon ECONYL® offre les mêmes performances que le nylon neuf fabriqué à partir de pétrole et peut être recyclé, recréé et remodelé à l'infini.

Tapis antitaches

Concevoir des tapis antitaches n'a jamais été aussi simple que depuis la création de la nouvelle fibre «ECONYL® Stay-Clean». La fibre de nylon 6 assure une protection optimale contre les taches. Elle est composée de fibres 100% nylon régénéré et teint en solution. Le fil intrinsèquement résistant aux taches et ses polymères présentent des caractéristiques de polymère uniques qui perdurent pendant toute la durée de vie du tapis. Cela garantit un nettoyage efficace en utilisant uniquement de l'eau.

Un fil sur mesure

Fabriquée avec un polymère modifié, une section transversale spéciale et une technologie de finition de pointe, cette fibre de nylon 6 teinte allie propreté et résistance maximale à l'usure.

Notre mélange spécial garantit :

- RÉSISTANCE À LA LUMIÈRE
- STABILITÉ DE LA COULEUR
- RÉSISTANCE AUX RAYONS UV

Développement durable

Le nylon ECONYL® est fabriqué à partir de 100 % de déchets, est 100 % recyclable et offre une réduction de 90 % du potentiel de réchauffement de la planète par rapport au nylon standard.

Pour 10 000 tonnes de nylon ECONYL® utilisées en remplacement du nylon vierge, 70 000 barils de pétrole brut sont économisés et 65 100 tonnes de CO2 sont évitées. Pas de déchets. Pas de nouvelles ressources. Des possibilités infinies.

Pour en savoir plus, visitez www.econyl.com



PERFORMANCE & DURABILITÉ:

Ratio de modification

Le ratio de modification estime la performance d'une fibre en utilisant un calcul mathématique basé sur la rondeur de la fibre. Plus la fibre est ronde, plus le ratio de modification est faible et meilleure sera la performance du tapis.

- Plus le ratio est petit, plus la fibre sera résistante aux taches et meilleure sera la résistance à l'usure du tapis.
- Plus le ratio est grand, plus la fibre risque de piéger et de retenir la saleté, de s'écraser ou de s'emmêler prématurément
- La forme des fibres dans le système de fils d'un tapis est importante car elle affecte l'aspect et les performances du tapis, notamment sa durée de vie, sa facilité de nettoyage et la qualité de ses fibres.

PERFORMANCE & DURABILITY:

Modification Ratio

Modification ratio estimates a fiber's performance, using a mathematical calculation based on the roundness of the fiber. The rounder the fiber, the lower the modification ratio, and the better the carpet will perform.

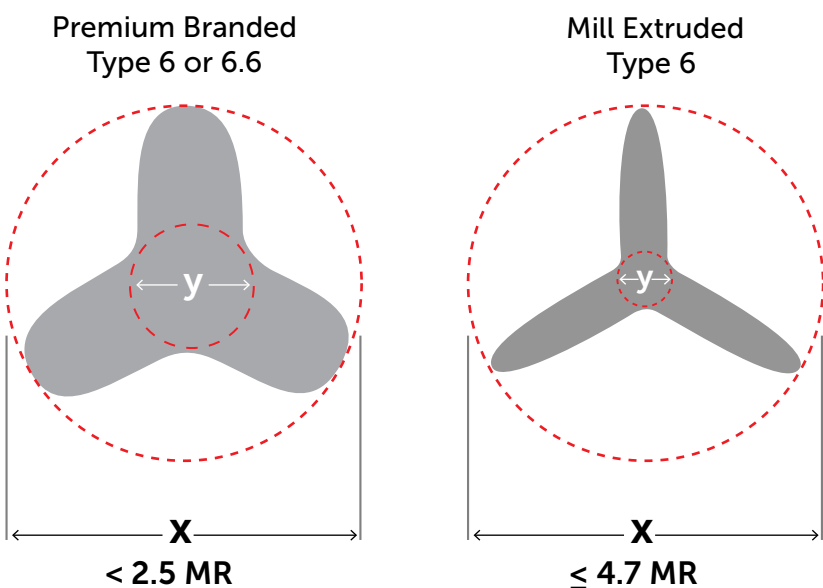
- The smaller the ratio, the more soil resistant the fiber will be and the better the carpet will wear.
- The larger the ratio, the more likely the fiber will trap and hold soil and the carpet might experience premature pile crush or matting.
- The shape of the fibers in a carpet's yarn system is important because it affects the carpet's appearance and performance – including how long the carpet can be expected to last, how easy it will be to clean, and how well the fibers will resist soil and dirt.

MODIFICATION RATIO

Geometrical correlation to appearance and durability and maintenance

RATIO DE MODIFICATION

Corrélation géométrique de l'apparence, la durabilité et l'entretien



Modification ratio / Ratio de modification: x/y

FOUR SACRED MEDICINES

SURFACE TEXTURE / SURFACE DU TAPIS

Multilevel loop • Bouclé motif à niveaux multiples

DIMENSIONS



PLANKS • PLANCHE
9.84" x 39.37"
25 cm x 100 cm



TILES • TUILES (Ancestral threads and Earthweave)
19.68" x 19.68"
50 cm x 50 cm

PILE FIBER CONTENT / MÉLANGE DE FIBRE

100% AQUAFIL BCF ANTI-STATIC ECONYL® • NYLON 100% Aquafil filament continu antistatique nylon ECONYL®

DYE SYSTEM / SYSTÈME DE TEINTURE

Solution Dyed • Teinture en solution

PRIMARY BACKING / ENDOS PRIMAIRE

Non-Woven Polyester • Polyester non-tissé

SECONDARY BACKING / ENDOS SECONDAIRE

Fiberglass Reinforced Thermoplastic - PermaFuse™ Technology - Phthalate Free
Module de P.V.C. renforcé de fibre de verre - Technologie d'endos PermaFuse^{MC} - Sans phthalate

IMPERIAL / IMPÉRIAL METRIC / MÉTRIQUE

PILE WEIGHT / POIDS DU VELOURS
GAUGE / CALIBRE
STITCHES / RANGÉES DE TOUFFES
PILE HEIGHT / HAUTEUR DU VELOURS
PILE THICKNESS / ÉPAISSEUR DU VELOURS
DENSITY FACTOR / FACTEUR DE DENSITÉ
TOTAL WEIGHT / POIDS TOTAL

21.0 oz / y ² • v ²	712 g/m ²
1/12 ga	47.2 / 10 cm
12 / in • po	47.2 / 10 cm
0.175 in • po	4.45 mm
0.120 in • po	3.04 mm
6948	10.72 ktex
112.04 oz / y ² • oz / v ²	3798 g / m ²

FLAMMABILITY / INFLAMMABILITÉ

ASTM E-648 Class I

SMOKE DENSITY / DENSITÉ DE LA FUMÉE

ASTM E-662 < 450 Flaming mode • ASTM E-662 < 450 mode de combustion

ANTI-STATIC PROPERTIES / PROPRIÉTÉ ANTISTATIQUE

< 3.0 kv at 20% r.h. & 21° C • < 3.0 kv à 20% h.r. & 21° C

DIMENSIONAL STABILITY / STABILITÉ DIMENSIONNELLE

< 0.05 %

LIGHTFASTNESS / SOLIDITÉ À LA LUMIÈRE

L5 or Better / L5 ou supérieur

RESISTANCE TO WET CLEANING
RÉSISTANCE AU NETTOYAGE HUMIDE

Grey Scale 5
5 à l'échelle des gris

ACOUSTIC / ACOUSTIQUE ASTM-E3133

70

ACOUSTIC / ACOUSTIQUE ASTM-E492

60

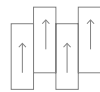
WARRANTY INFORMATION / GARANTIES

Lifetime Limited Commercial Wear & Anti-Static • Garantie limitée à vie contre l'usure commerciale et antistatique
Lifetime Limited Commercial Against Delamination • Garantie limitée à vie contre la délamination
Lifetime Limited Commercial on Dimensional Stability • Garantie limitée à vie de la stabilité dimensionnelle
Lifetime Limited Against Backing Deterioration • Garantie limitée à vie contre la détérioration de l'endos

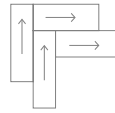
ENVIRONMENTAL / ENVIRONNEMENT

Indoor air quality no. GLP 3315 • No Qualité air intérieur GLP 3315

INSTALLATION METHOD / MÉTHODE D'INSTALLATION



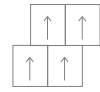
Classique
Classic



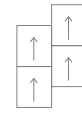
Chevron
Herringbone



Quart de tour
Quarter-Turn

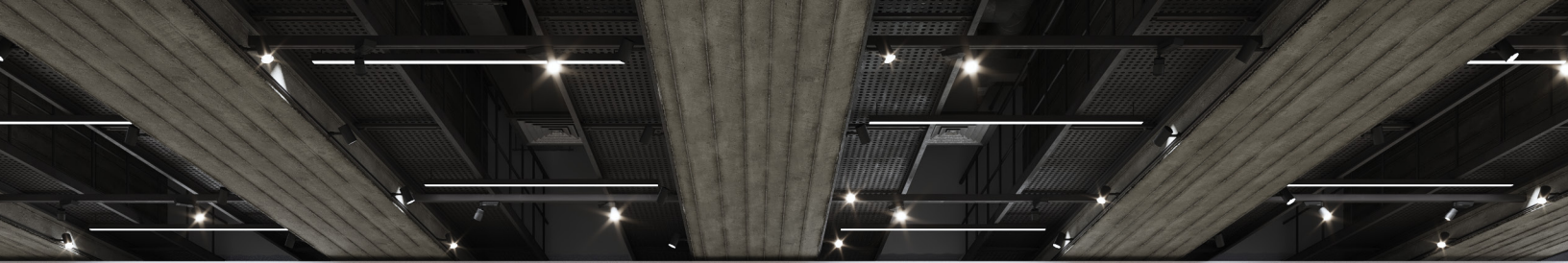


Brique
Brick



Ashlar





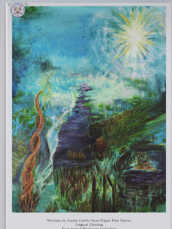
1. The University of Malaya (1950-1951) by Yusoff Kariem



2. The University of Malaya (1950-1951) by Yusoff Kariem



3. The University of Malaya (1950-1951) by Yusoff Kariem



4. The University of Malaya (1950-1951) by Yusoff Kariem



